



Whiston Accident and Emergency department Monthly bulletin: January to September 2005

This bulletin provides a breakdown of all trauma¹ attendances at Whiston Accident and Emergency department between January and September 2005. More detailed analyses will be provided in TIIG themed reports, which will include information on all data providers.

Figure 1 illustrates the number of trauma attendances by month of attendance. February had the lowest number of trauma attendances at 3,329, with July having the highest, at 4,241.

Figure 1: Total number of trauma attendances by month, January to September 2005

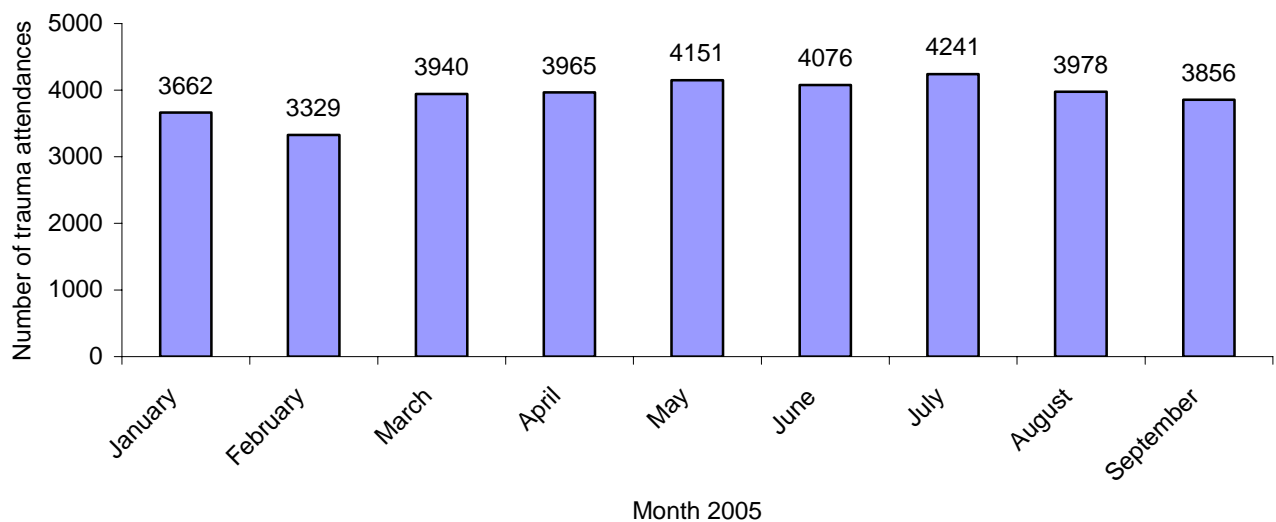
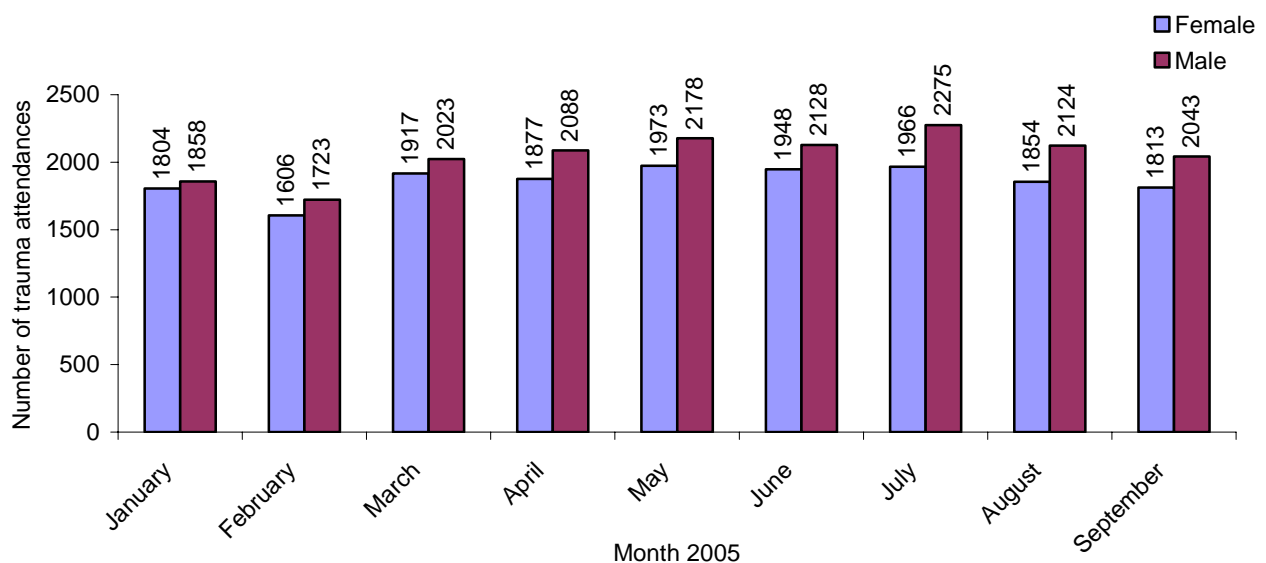


Figure 2 shows trauma attendances by gender. For all months there were more male trauma attendances than female.

Figure 2: Gender of trauma attendances by month, January to September 2005



¹Trauma refers to any A&E attendance that was made as a result of an accident or intentional/unintentional injury.

Figure 3 illustrates age group of trauma attendances. For all months, the majority of trauma attendances were over the age of 14 years. This may be due to the close proximity of a local children's A&E department (Alder Hey).

Figure 3: Age group of trauma attendances by month, January to September 2005

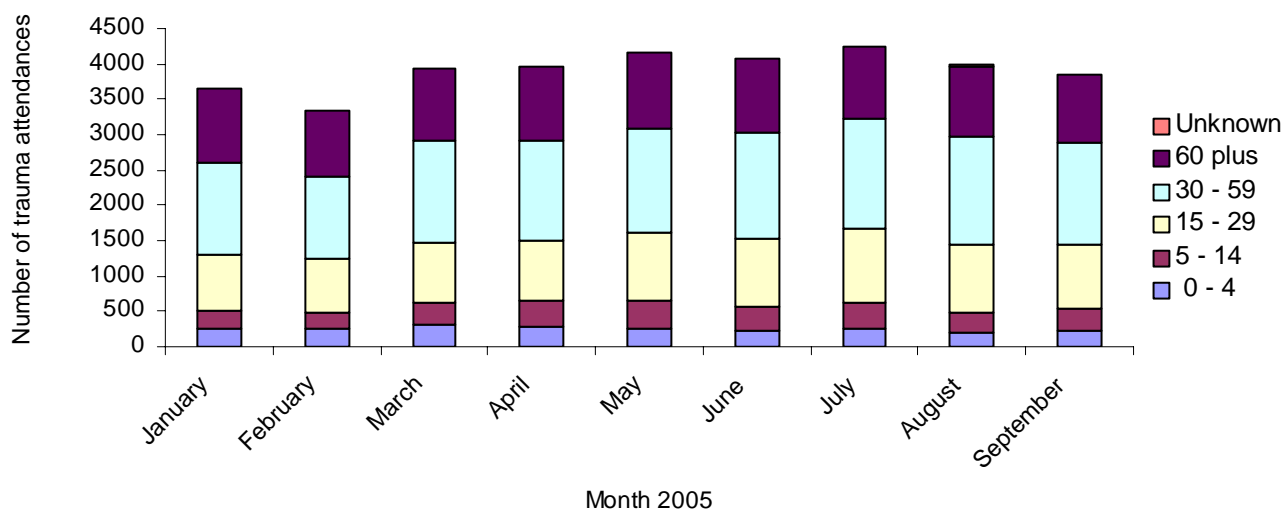


Table 1 details injury group of trauma attendances. Half (50%) of trauma attendances were classed as 'other injury'. A further 21% were classed as fall. During the months of July to September there appears to be a reduction in the number of fall attendances to Whiston A&E department. However, a new injury group category (Minor Injury) was introduced into the A&E IT system in June and it is possible that fall attendances are now being coded as Minor Injury.

Table 1: Trauma attendances by injury group, January to September 2005

Injury Group	Jan	Feb	Mar	Apr	May	Jun	Jul	Aug	Sep	Total	Total %
Other Injury	1783	1554	1878	1888	2069	2083	2389	2221	1869	17734	50
Fall	872	811	937	955	992	980	676	687	596	7506	21
Road Traffic Accident	288	311	314	326	325	305	252	194	265	2580	7
Assault	174	201	212	209	198	219	149	139	180	1681	5
Sports	201	165	228	218	194	145	99	112	180	1542	4
Minor injury	0	0	0	0	0	2	356	327	503	1188	3
Foreign Body	103	86	103	136	119	117	103	96	73	936	3
Ingestion	91	72	88	85	77	78	62	57	57	667	2
Burns & Scalds	75	64	92	60	76	75	60	58	61	621	2
Head Injury	50	45	68	65	79	54	68	52	52	533	2
Deliberate Self-Harm	25	20	20	23	21	16	26	35	20	206	1
Firework	0	0	0	0	1	2	1	0	0	4	0
Total	3662	3329	3940	3965	4151	4076	4241	3978	3856	35198	100

Six in ten (63%) trauma attendances arrived at A&E via private transport. A third (31%) arrived via an ambulance.

Table 2: Trauma attendances by arrival mode, January to September 2005

Mode of arrival	Jan	Feb	Mar	Apr	May	Jun	Jul	Aug	Sep	Total	Total %
Private Transport	2189	2018	2484	2532	2655	2605	2710	2454	2451	22098	63
Ambulance	1301	1104	1244	1205	1251	1233	1254	1270	1191	11053	31
Public Transport	96	125	135	134	145	133	162	154	134	1218	3
Walked In	54	61	61	68	68	71	74	66	56	579	2
Police	15	11	12	15	22	22	21	19	10	147	0
Other	7	10	4	11	10	12	20	15	14	103	0
Total	3662	3329	3940	3965	4151	4076	4241	3978	3856	35198	100

Sixty three percent of trauma attendances self referred to A&E, whilst 16% were referred by a parent.

Table 3: Trauma attendances by referral mode, January to September 2005

Referrer	Jan	Feb	Mar	Apr	May	Jun	Jul	Aug	Sep	Total	Total %
Self Referral	2308	2166	2434	2437	2574	2451	2728	2600	2432	22130	63
Parents	560	487	596	720	708	746	552	486	668	5523	16
Emergency Services	328	302	389	387	372	398	280	286	359	3101	9
Other Hospital	131	95	144	93	126	155	117	87	62	1010	3
Walk-in Centre	66	64	73	83	84	81	126	137	174	888	3
GP	66	56	75	68	73	50	204	176	44	812	2
Other Referrer	47	34	70	45	64	50	51	30	27	418	1
Employer	41	36	57	31	41	32	38	32	17	325	1
Grandparents	20	21	23	32	23	17	20	20	18	194	1
Carer	23	15	16	17	15	28	14	18	14	160	0
Police	12	14	17	18	21	10	22	14	6	134	0
A&E	18	15	13	9	18	11	20	15	13	132	0
From GP Surgery	0	0	0	0	0	1	45	54	0	100	0
Teacher	15	7	15	9	10	18	10	0	7	91	0
Primary Care	12	5	5	6	8	14	2	9	4	65	0
Guardian	3	3	7	7	8	6	3	5	4	46	0
School Nurse	10	6	2	2	4	4	3	0	3	34	0
Health Visitor	0	1	0	0	1	1	2	1	2	8	0
District Nurse	0	1	2	0	0	1	1	2	0	7	0
Optician	1	0	1	1	1	1	0	2	0	7	0
Prison Service	1	1	1	0	0	0	0	0	1	4	0
Consultant	0	0	0	0	0	0	1	1	0	2	0
Occupational Therapist	0	0	0	0	0	1	1	0	0	2	0
Social Services	0	0	0	0	0	0	0	2	0	2	0
Community Psychiatric Nurse	0	0	0	0	0	0	0	0	1	1	0
Physiotherapist	0	0	0	0	0	0	1	0	0	1	0
Trainee GP	0	0	0	0	0	0	0	1	0	1	0
Total	3662	3329	3940	3965	4151	4076	4241	3978	3856	35198	100

The ethnicity of the majority (95%) of trauma attendances to Whiston A&E department was white.

Table 4: Trauma attendances by ethnicity, January to September 2005

Ethnicity	Jan	Feb	Mar	Apr	May	Jun	Jul	Aug	Sep	Total	Total %
White	3456	3167	3739	3773	3943	3893	4040	3788	3679	33478	95
Black African	71	58	68	77	89	80	81	74	75	673	2
Unknown	91	64	84	79	70	69	74	59	51	641	2
Black Caribbean	19	19	21	18	16	14	17	27	21	172	0
Chinese	13	7	10	6	18	6	11	14	10	95	0
Bangladeshi	5	8	10	3	8	4	4	10	7	59	0
Any Other Asian											
Background	4	2	4	3	3	4	8	1	3	32	0
Black Other	2	3	0	0	2	2	4	2	5	20	0
Indian	1	0	3	3	2	1	0	0	3	13	0
Pakistani	0	0	1	2	0	3	0	0	2	8	0
Asian Bangladeshi	0	1	0	1	0	0	2	3	0	7	0
Total	3662	3329	3940	3965	4151	4076	4241	3978	3856	35198	100

Table 5 details the discharge method of trauma attendances to Whiston A&E department. Almost a third (32%) of trauma attendances were admitted to hospital for further treatment.

Table 5: Discharge method of trauma attendances, January to September 2005

Discharge	Jan	Feb	Mar	Apr	May	Jun	Jul	Aug	Sep	Total	Total %
Discharged no follow up	1133	1074	1272	1381	1479	1520	1541	1397	1279	12076	34
Admissions	1296	1130	1325	1245	1305	1225	1257	1266	1209	11258	32
Discharged to General Practitioner (GP)	507	492	608	547	546	523	567	553	523	4866	14
Fracture Clinic	131	123	148	166	161	173	159	156	132	1349	4
Did not wait	122	100	129	109	132	125	151	125	159	1152	3
Sent to GP assessment unit	97	65	87	125	113	97	110	99	86	879	2
A&E Review Clinic	83	66	63	79	75	85	81	77	75	684	2
Physiotherapy Clinic	53	44	44	53	66	61	59	48	68	496	1
Outpatient Clinic	35	48	44	46	42	29	40	35	38	357	1
Sent to Other Hospital	31	36	42	46	38	39	47	39	38	356	1
Discharged returning to GP clinic at Whiston A&E	41	16	33	35	25	47	53	25	45	320	1
Discharged with Ear/Nose/Throat appointment at Whiston	15	29	30	26	24	24	25	14	28	215	1
Return for Treatment	25	18	24	11	24	17	24	15	23	181	1
Other	93	88	91	96	121	111	127	129	153	1009	3
Total	3662	3329	3940	3965	4151	4076	4241	3978	3856	35198	100

Published November 2005

Zara Anderson

TIIG analyst

Centre for Public Health, Faculty of Health and Applied Social Sciences, Liverpool John Moores University
Castle House, North Street, Liverpool, L3 2AY

Tel: 0151 231 4505 Email: z.a.anderson@ljmu.ac.uk Website: www.nwpho.org.uk/ait